

CONTENTS:

A - AUTOMATIC METHOD

- 1. Firmware update 2**
- 1.1. Update preconditions 2**
- 1.2. Update procedure - LAN scenario 2 - 6**
- 1.3. Update procedure - WAN scenario 7 - 11**

B - MANUAL METHOD

- 1. Copy all files of new firmware12**
- 1.1. Establish new FTP connection 12**
- 1.2. Delete all original files in Online Controller 13**
- 1.3. Copy new firmware files 13**
- 1.4. Verify all files and their size 14**
- 1.5. Copy corrupted files again 14**
- 1.6. Disconnect FTP session 15**
- 2. Reprogramming new firmware15**
- 2.1. Start command window 15**
- 2.2. Open TELNET connection 15 - 16**
- 2.3. Start reprogramming process 16**
- 2.4. Close command window 16**
- 3. Enjoy new firmware version16**
- 4. Use Online Controller with improved firmware16**

A - AUTOMATIC METHOD

1. Firmware Update

As the development process is permanently running, there always will be some improvements and new firmware versions for Online Controller. It is recommended to download it and process the update procedure. The new firmware usually contains new features or improved functionality. The last firmware is available at our web-page <http://www.onlinecontroller.eu/sk/download/> or on Daikin Extranet.

1.1. Update preconditions

1. Visual Basic Runtime Files are required. Visual Basic Runtime Files are in general components of Windows or they can be downloaded from <http://support.microsoft.com/kb/192461> and installed.
2. In the case of using Firewall on computer it is recommended to allow FTP (TCP ports 20 and 21) and TELNET (TCP port 23) or simply switch your Firewall to Interactive mode which will ask you for allowance. (Or the Firewall can be switched off for update period).
3. For WAN scenario, it is important to set up the router for remote access, read chapter 1.3. paragraph 1.

There is possible to perform Update **from inside of LAN** (Computer and Online Controller are both in Local Area Network connected to switch – **LAN scenario**) or from **WAN** (Computer is somewhere in the Internet and Online Controller is in Local Area Network – **WAN scenario**).

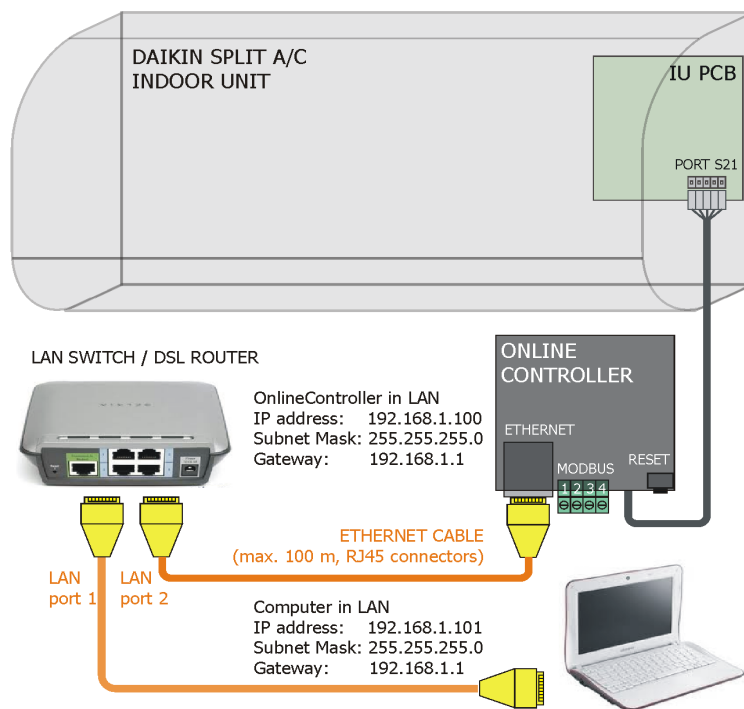
1.2. Update procedure – LAN scenario

The computer and Online Controller are in the same LAN (connected to the same switch see Picture No. 1 or directly connect through ethernet cable) and they have got the IP addresses from the same range. For example:

The Computer IP address: **192.168.1.101** with subnet mask 255.255.255.0

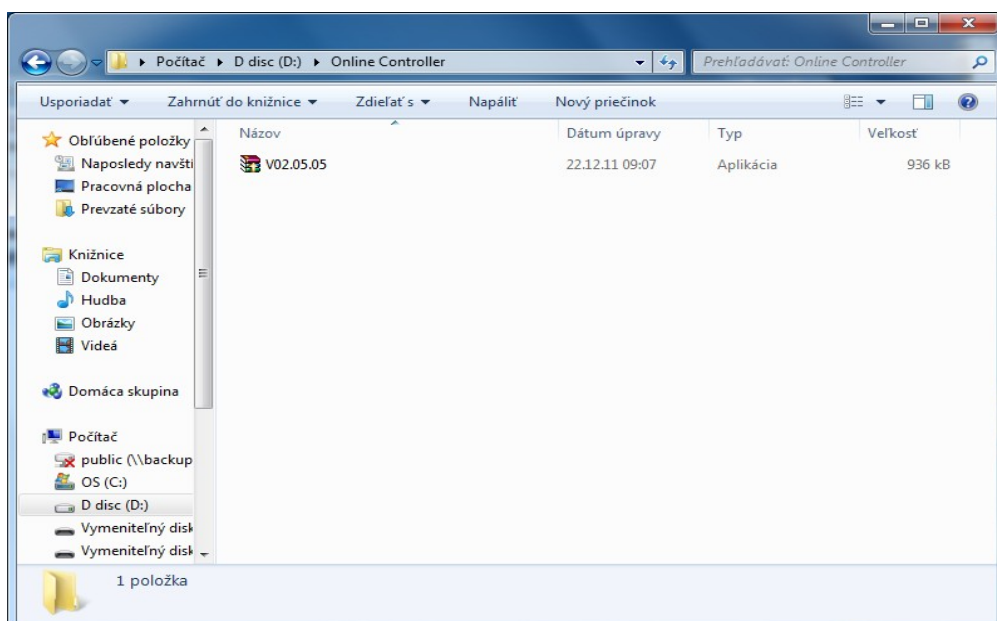
Online Controller IP address: **192.168.1.100** with subnet mask 255.255.255.0 (default values)

Please see chapter 1.2. Online Controller first configuration step 3 for network settings of computer.



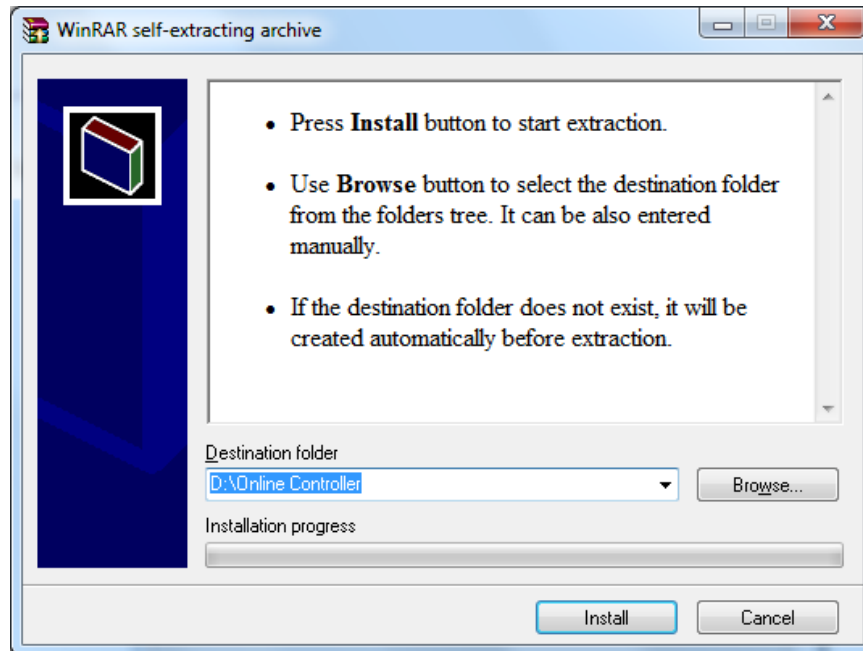
Picture No. 1

1. Download the exe file VX.Y.Z.zip (X.Y.Z is a number of firmware version) from download section of server and save it to the folder in computer. (See Picture No. 2).



Picture No. 2

2. Start the VX.Y.Z.exe (usually double-click on it). The following screen will be appeared (Picture No. 3). Follow the instructions on this screen to start the installation process and press the Install button.



Picture No. 3

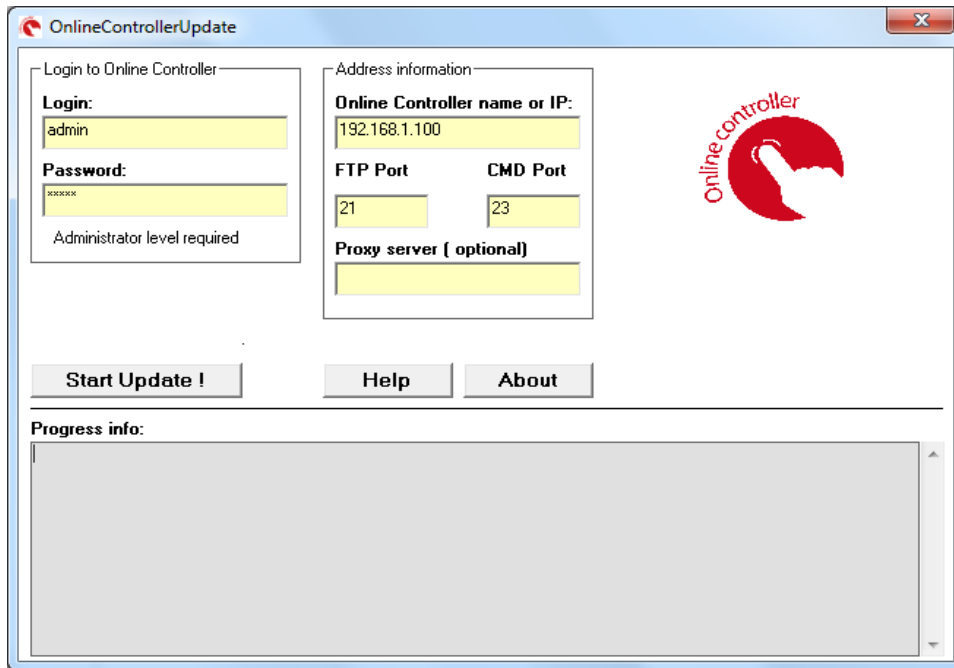
3. After pressing on Install button the OnlineControllerUpdate window will be appeared (Picture No. 4). The administrator level is required. Type the Login, password and Online Controller's IP address. See next picture No. 4:

Login – Login name for administrator access to Online Controller (default Login: **admin**)

Password – Password for administrator access to Online Controller (default Password: **admin**)

Online Controller name or IP address – IP address of Online Controller (default IP address: **192.168.1.100**)

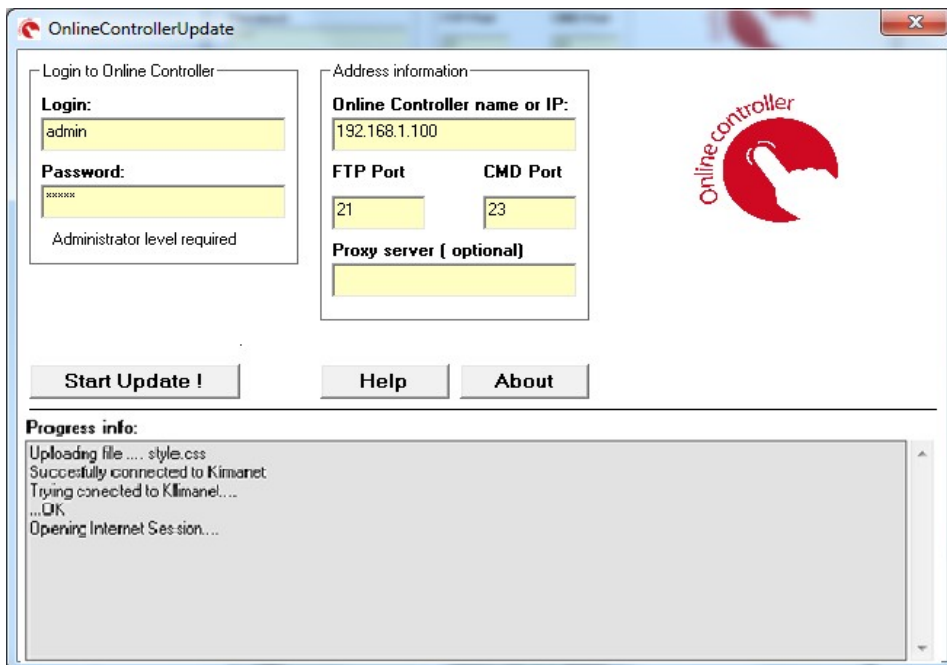
FTP Port and **CMD Port** – let it in predefined value (**FTP Port: 21, CMD Port: 23**)



Picture No. 4

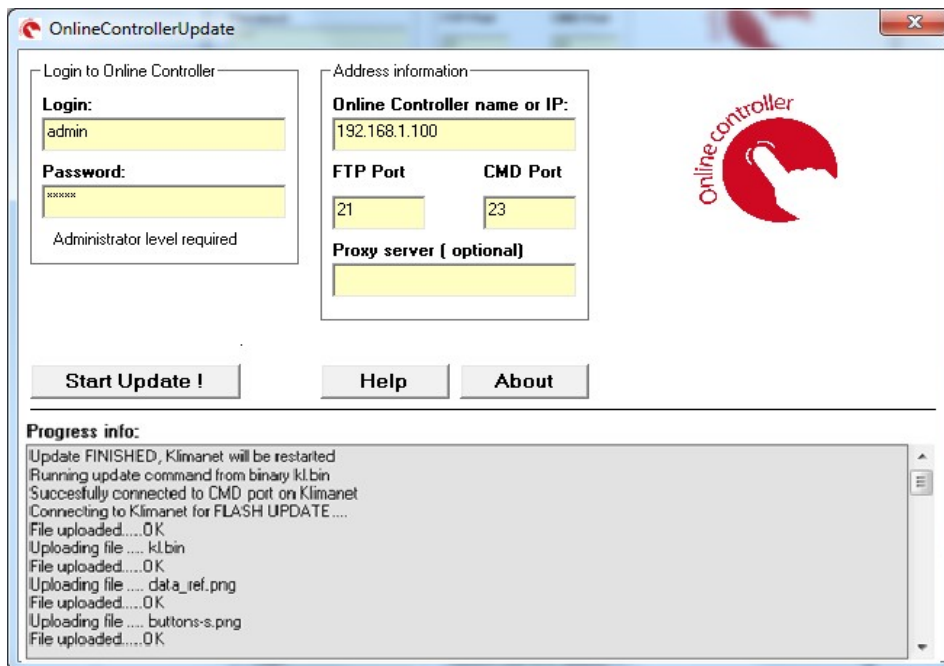
4. Then press **Start Update** button and the update process will be started.

The update process usually takes about 3-7 minutes; it depends on the network conditions.



Picture No. 5

5. After successful update the following text at the top of Progress info window is displayed: **Update FINISHED, Online Controller will be restarted** - see Picture No. 6.



Picture No. 6

6. If something else is displayed, please check the connection of Online Controller and computer, check update preconditions and start whole update procedure again.

1.3. Update procedure – WAN scenario

Computer is somewhere in Internet and Online Controller is in Local Area Network (LAN) with connectivity to Internet. WAN (public) IP address should be static (or hostname). On the picture No. 7 is an example of eventual WAN scenario.

The computer IP address (somewhere in Internet): 172.16.0.2

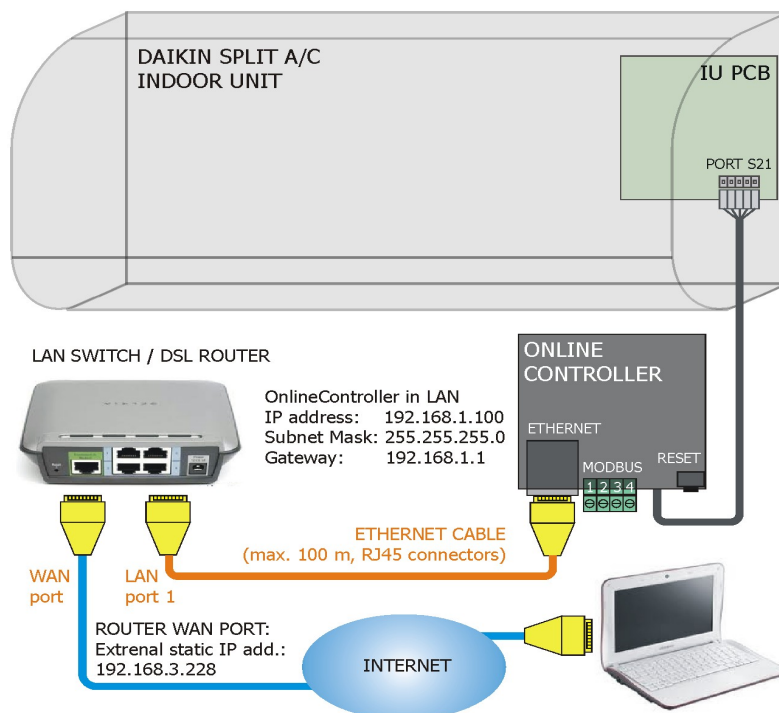
The public WAN IP address: 192.168.3.228 or hostname

192.168.1.100 with subnet mask 255.255.255.0 (default values)

Please see chapter 1.2. Online Controller first configuration step 3 for network settings of computer.

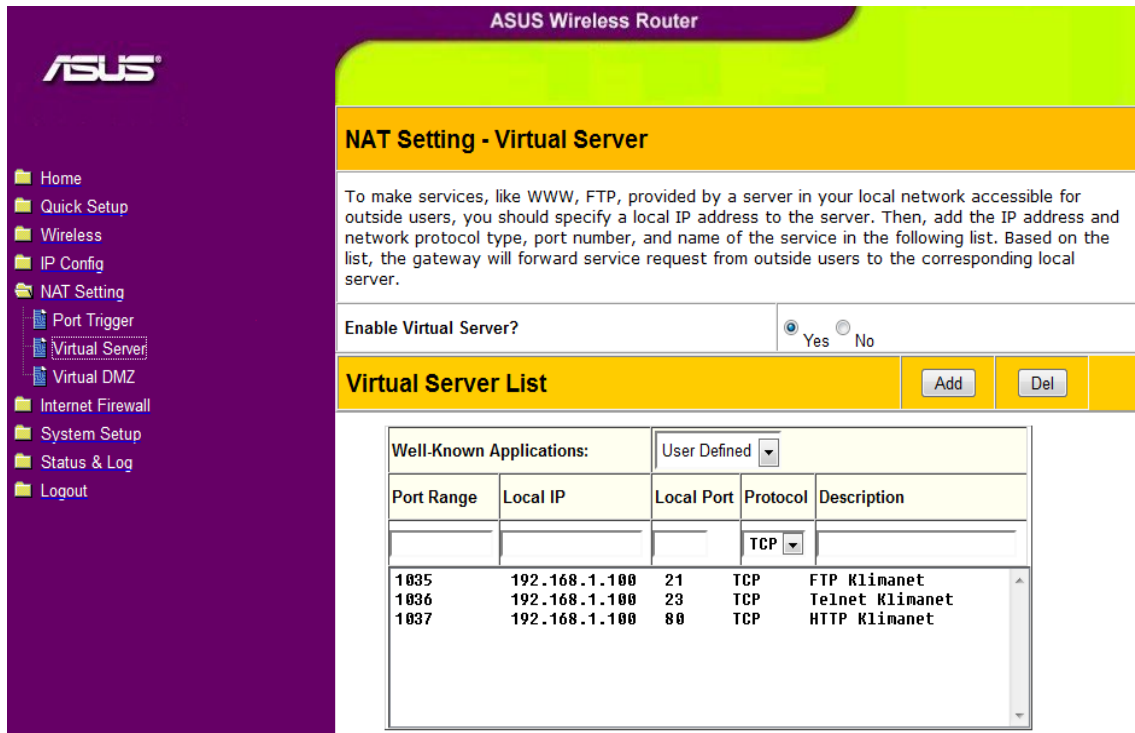


Note: Public IP address 192.168.3.228 in this example is only laboratory IP address. For update process it has to be real public IP address which is provided you from your Internet provider or it can be a hostname.



Picture No. 7

1. First of all you have to ensure, that the router/gateway is set up for remotely access to On-line Controller located inside. If not, you have to set it up for WAN access (FTP and TELNET). It is about setting up the NAT parameters (port forwarding or Virtual Server – can be called different for more routers).



Picture No. 8

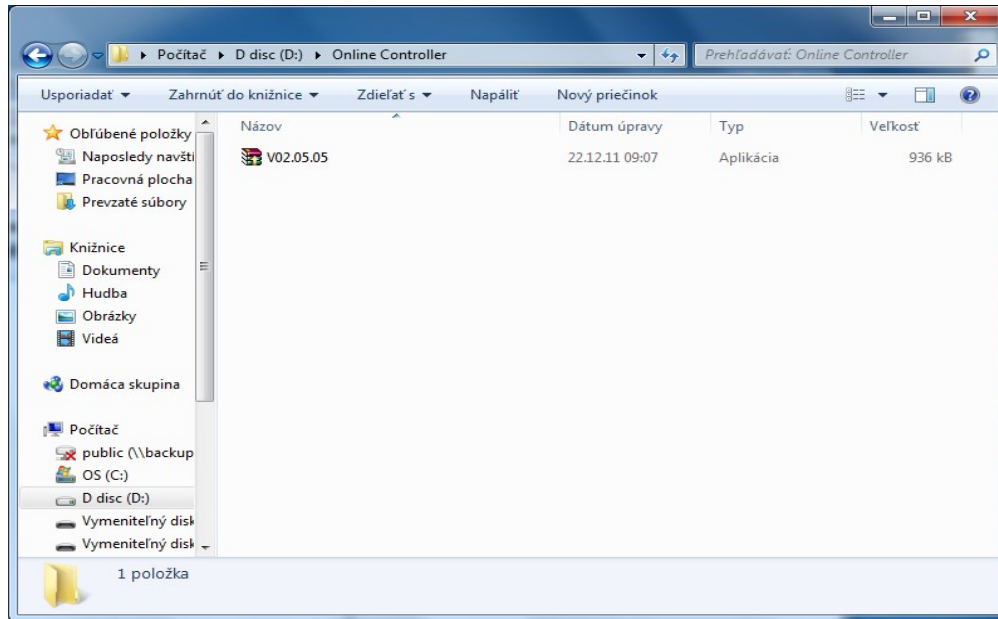
Enter the router setup pages (or contact your or customer network administrator) and set port forwarding up, it could be similar than the picture No. 8 shows.

For Example:

FTP communication via port 1035 from WAN will be forwarded to FTP default port (21) of Online Controller IP address in LAN.

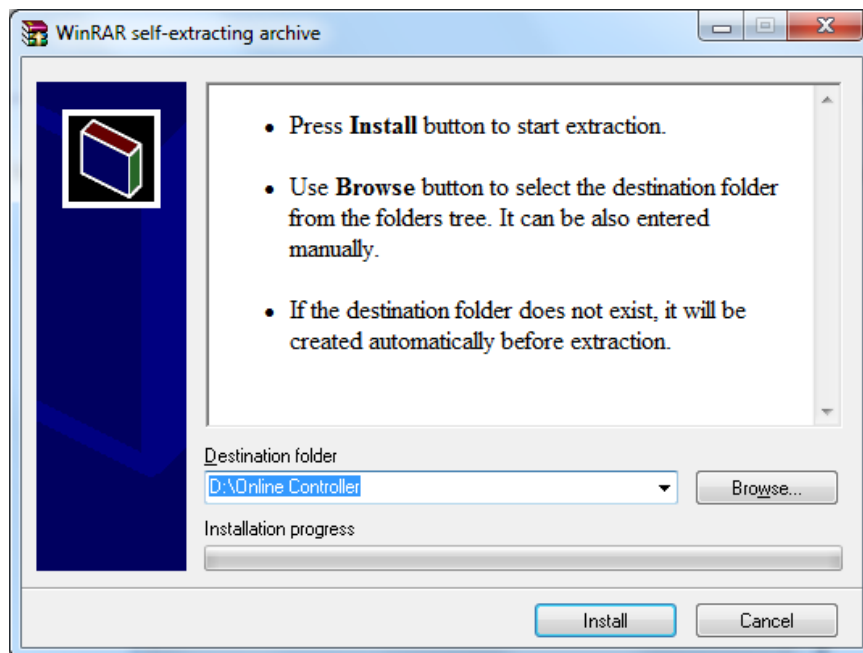
TELNET (or CMD) communication via port 1036 from WAN will be forwarded to TELNET default port (23) of Online Controller IP address in LAN.

2. Download the exe file VX.Y.Z.zip (X.Y.Z is a number of firmware version) from download section of server and save it to the folder in computer. (See Picture No. 9).



Picture No. 9

3. Start the VX.Y.Z.exe (usually double-click on it). The following screen will be appeared (Picture No. 10). Follow the instructions on this screen to start the installation process and press the Install button.



Picture No. 10

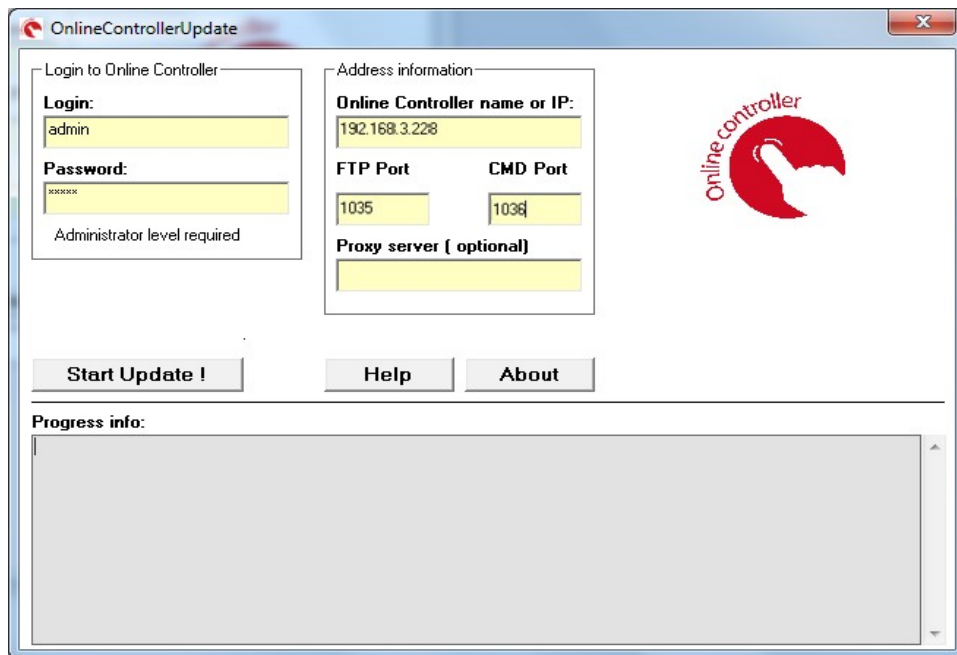
4. After pressing on Install button the OnlineControllerUpdate window will be appeared. The administrator level is required. Type the Login, password and Online Controller's IP address. See next picture No. 11:

Login – Login name for administrator access to Online Controller (default Login: **admin**)

Password – Password for administrator access to Online Controller (default Password: **admin**)

Online Controller name or IP address – The public WAN IP address of Online Controller's LAN network or hostname (192.168.3.228 in our example)

FTP Port and **CMD Port** – change it in accordance with your router settings – see next steps. In our example there is FTP Port: 1035 and CMD Port: 1036



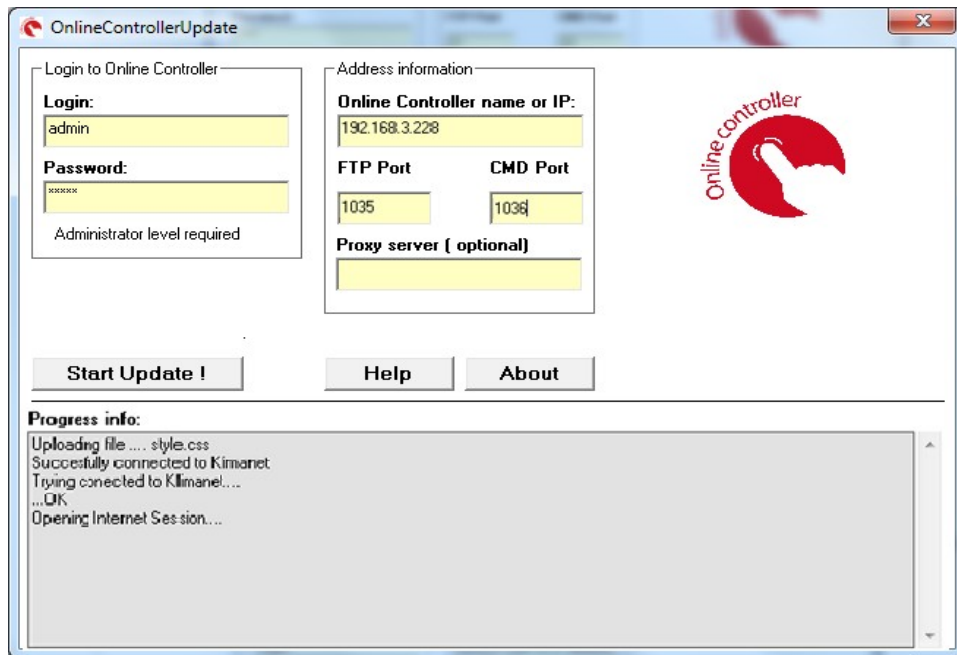
Picture No. 11



Note: Port 1037 from WAN is forwarded to HTTP port (80) of Online Controller IP address in LAN. It is used for remote access to Online Controller.

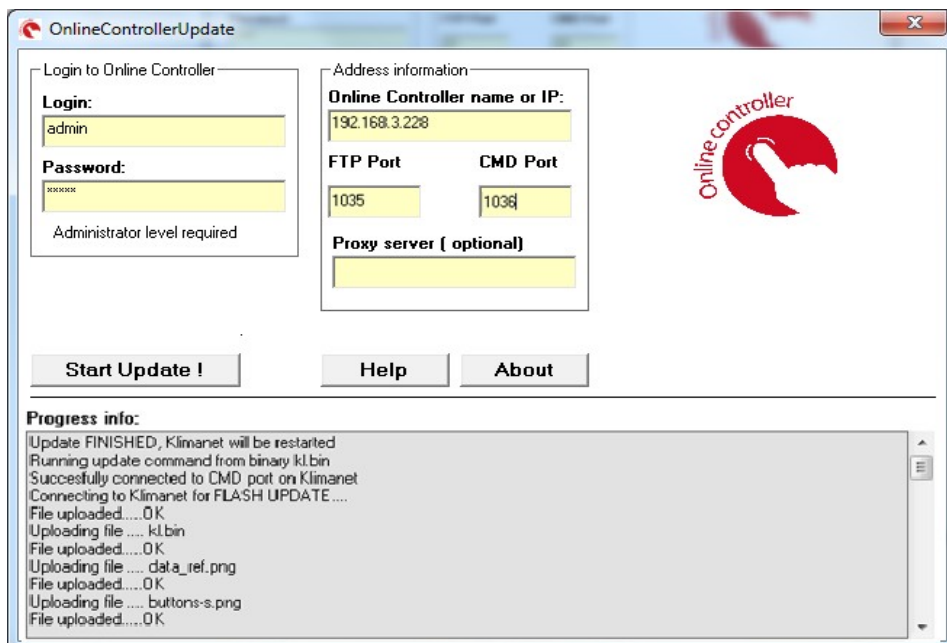
5. Then press **Start Update** button and the update process will be started.

The update process takes about 5-10 minutes.



Picture No. 12

6. After successful execution of update the following text at the top of Progress info is displayed: **Update FINISHED, Online Controller will be restarted** - see picture No. 13.



Picture No. 13

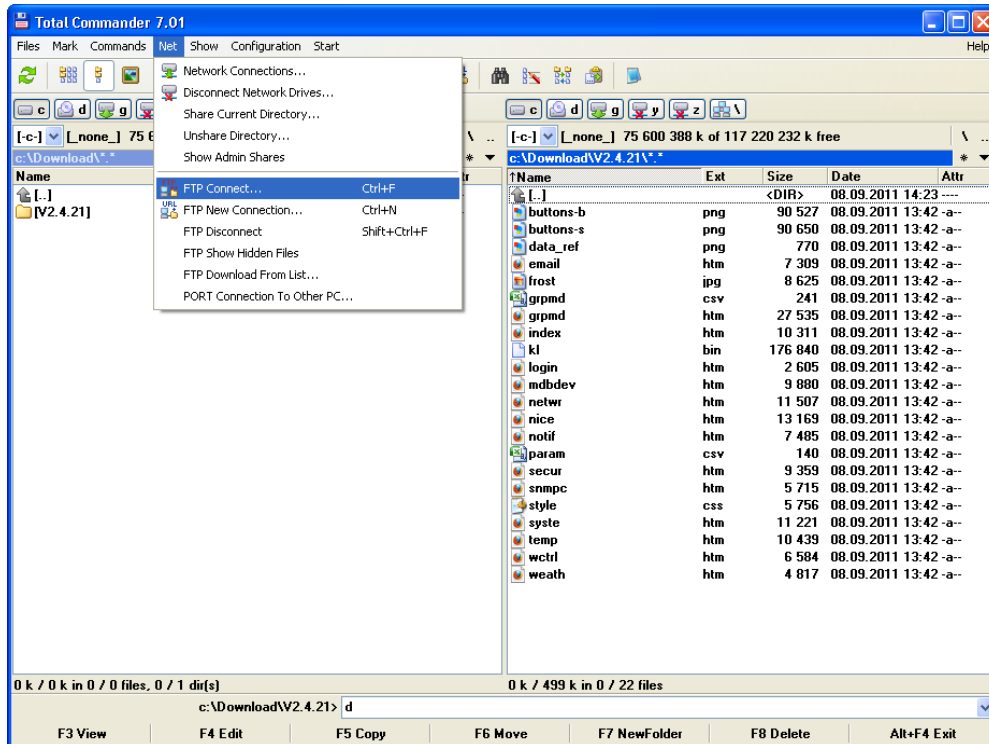
7. If something else is displayed, please check the connection of Online Controller and computer, check update preconditions and start whole update procedure again.

B - MANUAL METHOD

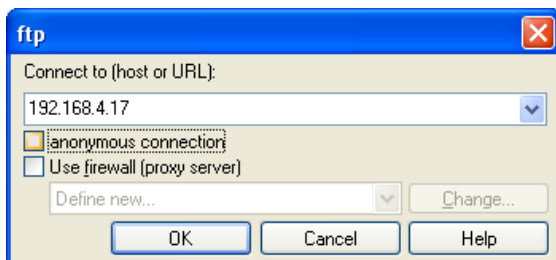
Note: This is supplementary method of firmware update. Please, use it, if it is not possible from any reason to use primary method (application Firmware Updater)

1. Copy all files of new firmware

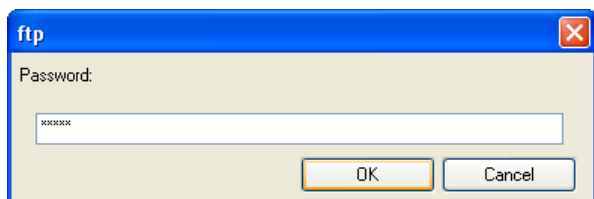
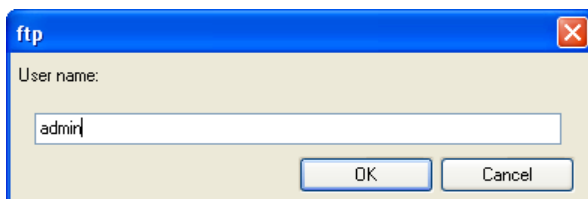
1.1. Establish new FTP connection



Start Total Commander and choose the folder with new firmware. If it is packed, unzip all files. Go to upper menu; choose Net and FTP New Connection. Then type Online Controller IP address in your LAN network.

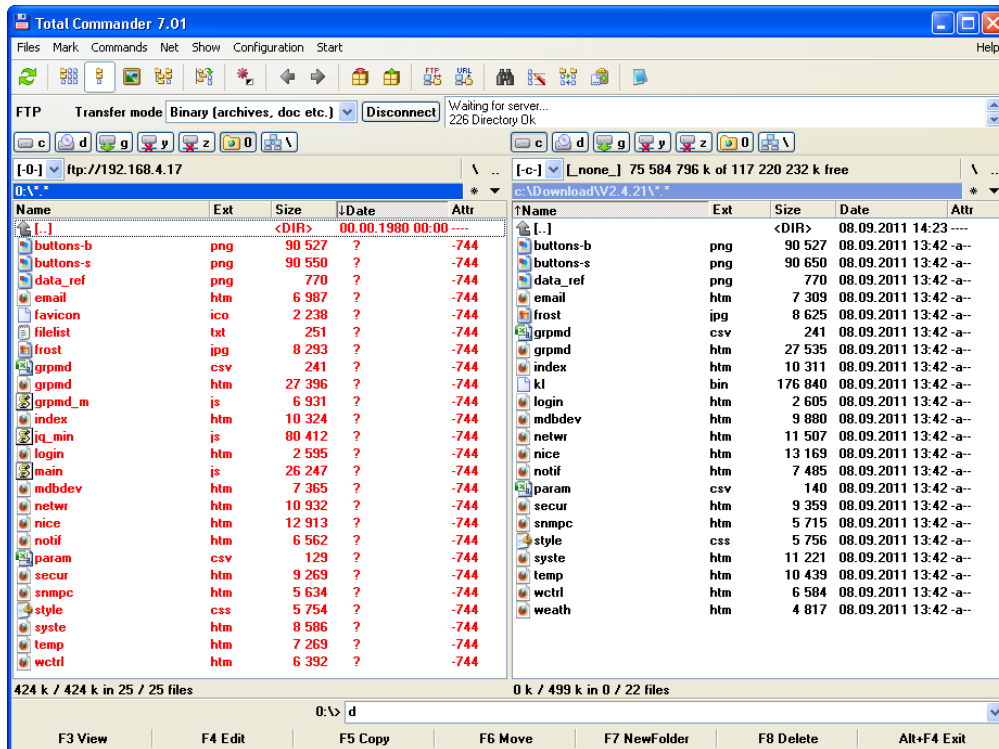


Write user name and password to cell, default is admin for both.



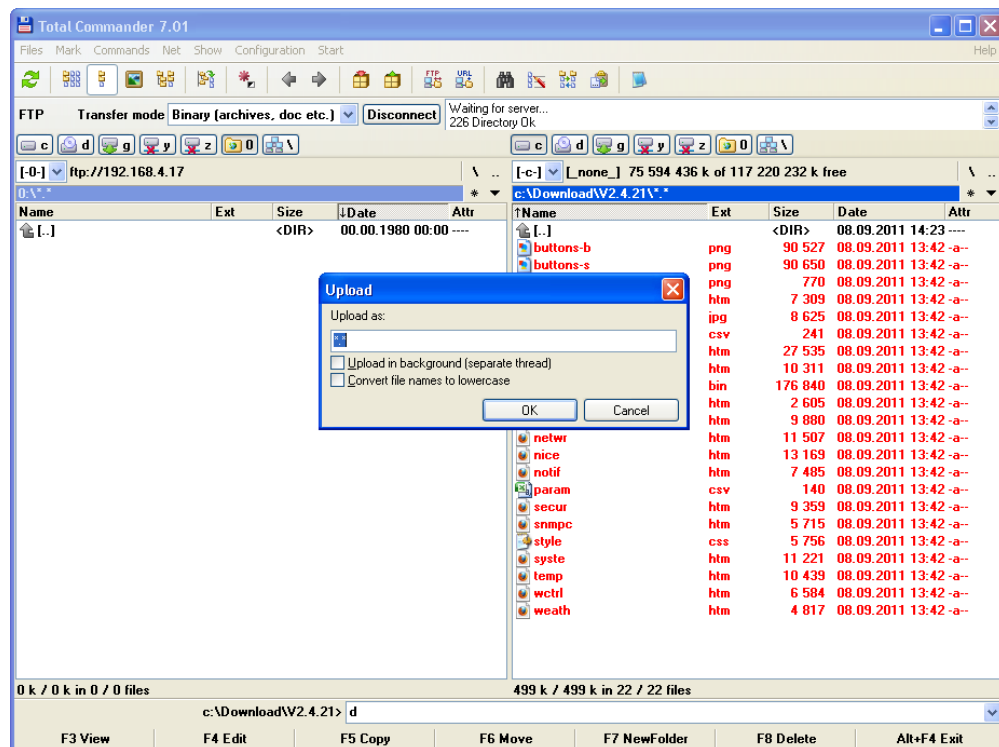
Confirm user name and password – press OK button. The FTP connection will establish.

1.2. Delete all files in Online Controller



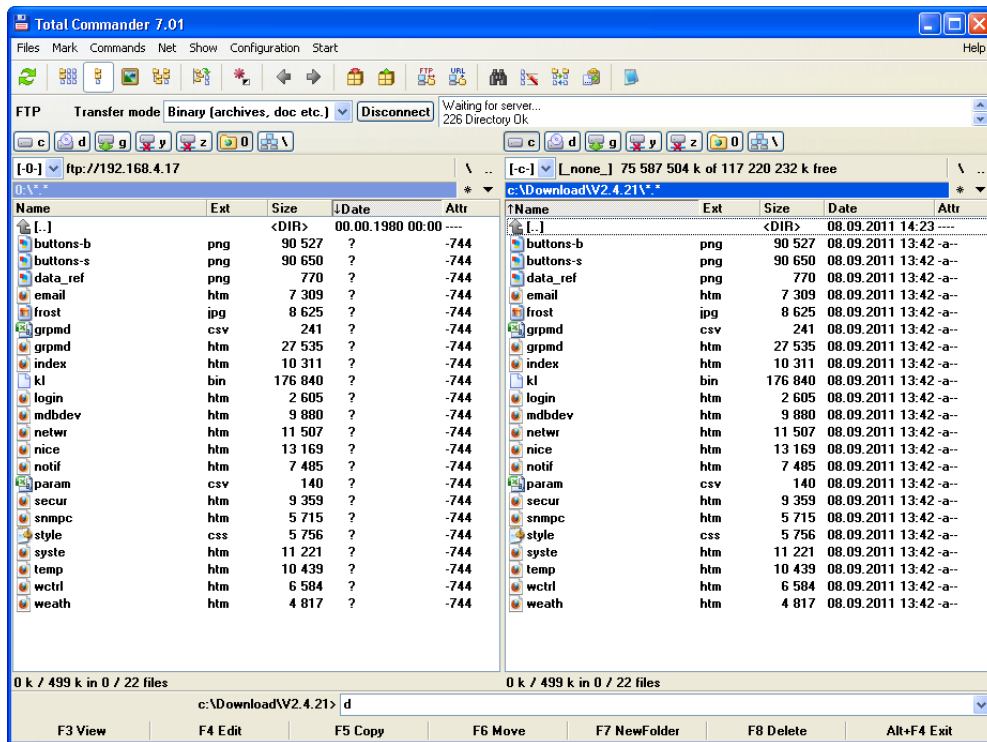
Delete all files in Online Controller by selecting all files and pressing DELETE button. Confirm that – press OK.

1.3. Copy new firmware files



Select all files of new firmware and press F5 COPY button at lower menu. Confirm – press OK.

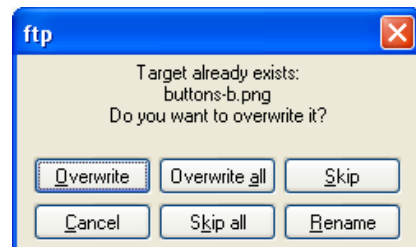
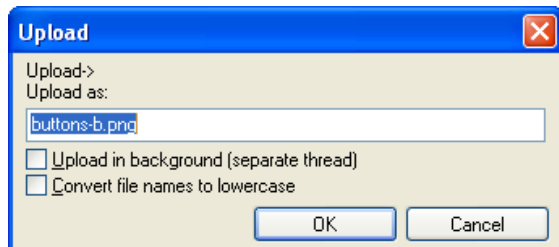
1.4. Verify all files and their size



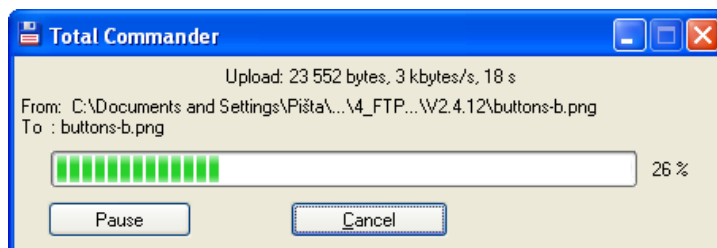
After copying, check all files and their size.

1.5. Copy corrupted files again

If



the file size does not match, you have to copy it again. Press F5 COPY button again.



will start.

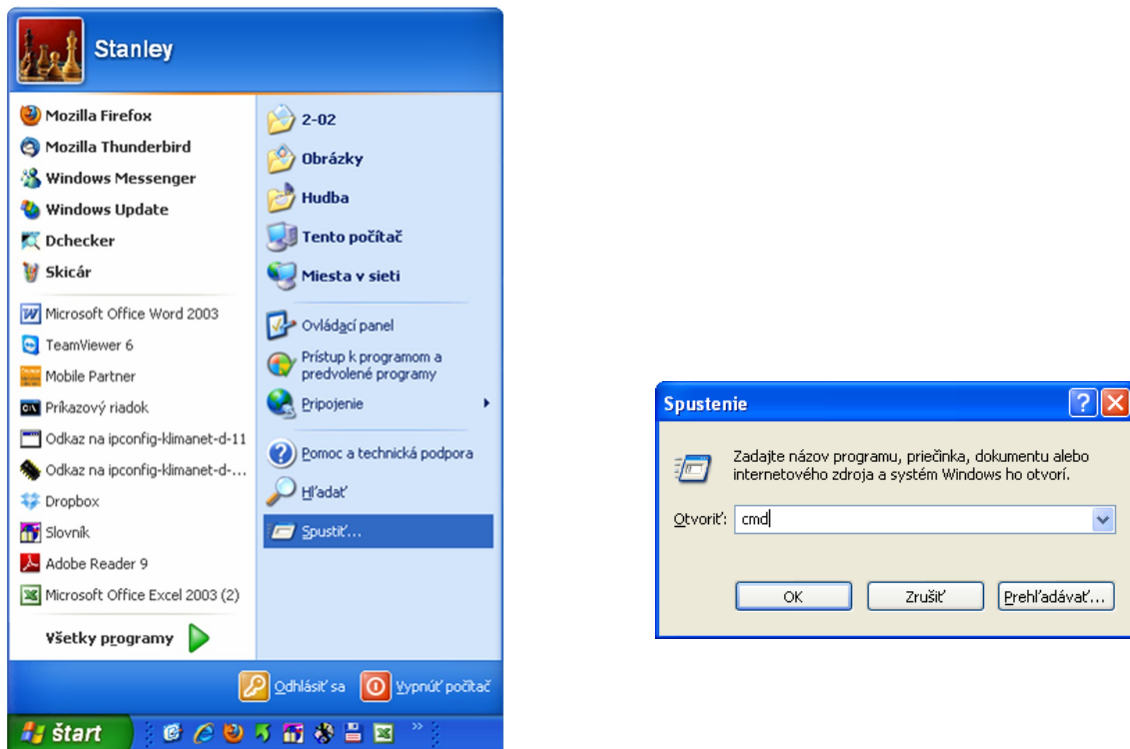
Confirm both issues. Copy process

1.6. Disconnect FTP session

Verify copying process again. If it is not successful, repeat the step 1.5.
Then press the DISCONNECT button. It is not necessary to save this session... press No.

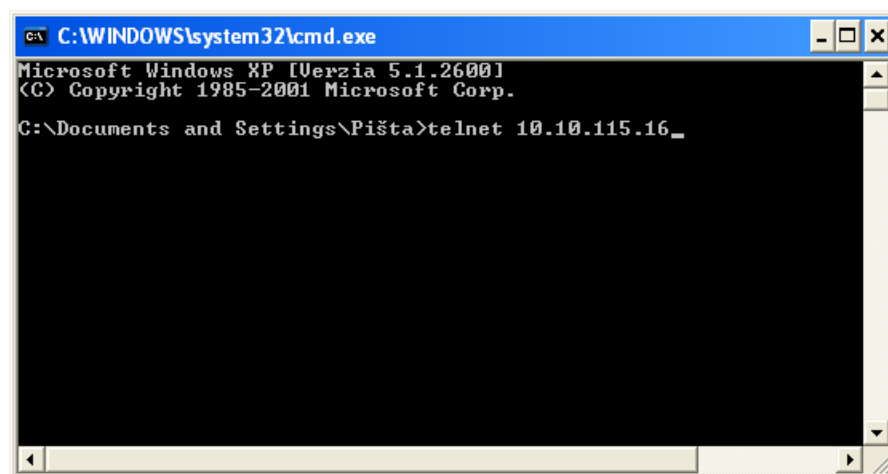
2. Reprogramming new firmware

2.1. Start command window

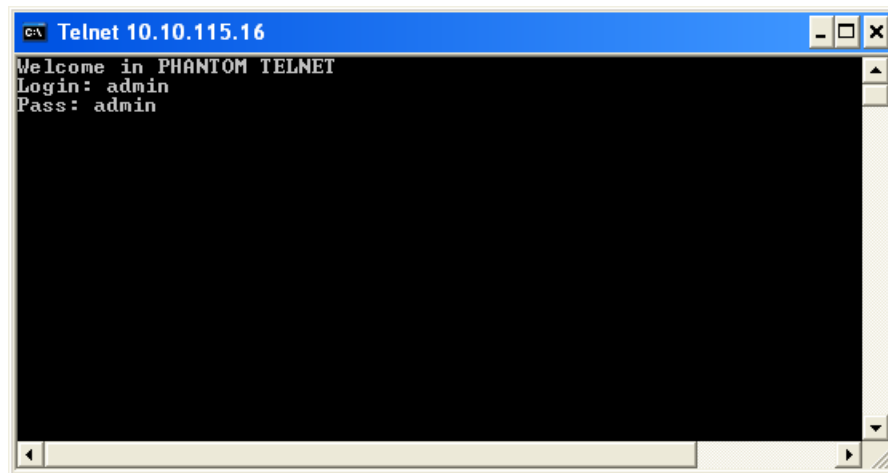


Go to Window's START button, then choose the RUN and type **cmd** to the cell. Press OK button.

2.2. Open TELNET connection



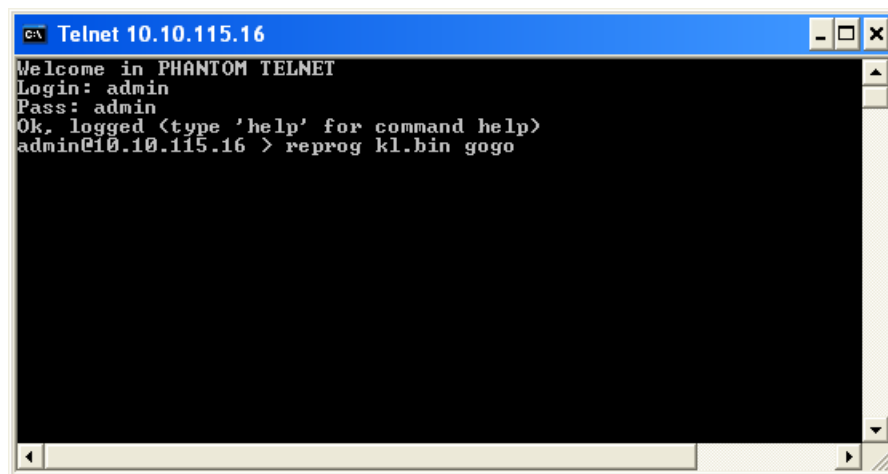
Write telnet IP_address of Online Controller and press Enter.



```
C:\> Telnet 10.10.115.16
Welcome in PHANTOM TELNET
Login: admin
Pass: admin
```

Write the login and password. It is admin for both.

2.3. Start reprogramming process



```
C:\> Telnet 10.10.115.16
Welcome in PHANTOM TELNET
Login: admin
Pass: admin
Ok, logged <type 'help' for command help>
admin@10.10.115.16 > reprog kl.bin gogo
```

Write reprog kl.bin gogo and press Enter. The reprogramming process will start. Wait 2 minutes approximately. After reprogramming, Online Controller will be restarted automatically.

2.4. Close command window

After time, you can close the command window, press upper-right crosslet.

3. Enjoy new firmware version

Online Controller has got new firmware and it is ready for use.

4. Use Online Controller with improved firmware